

# Metal and Aluminum Machining Equipment

## 金屬、鋁材機械設備

We offer quality, service, experience and the latest technology to fit your sanding demands.

Sherng Yuan offers a wide array of automatic belt grinding machines. Our unwavering focus on product innovation reinforces our determination to become a trusted supplier for our customers. Always endeavoring to not only provide the best quality but also the best after-sales service.

我們提供品質、服務、經驗及最新的技術來迎合您砂光需求。

我們生產各種自動環帶式磨砂機。我們不斷地改善產品，盡力成為一個最值得信賴的供應商；我們不只提供最好的品質，更提供細心的售後服務。



### METALLIC

Laser cutting burr grinding and chamfering  
Flame cutting burr grinding  
Stainless steel grinding

### NON-METALLIC

Rubber, plastic and artificial marble grinding



### 金屬研磨

雷射切割毛邊研磨倒角  
火焰切割毛邊研磨  
不銹鋼研磨

### 非金屬類

橡膠、塑膠、人造大理石  
等研磨



SHERNG YUAN MACHINERY CO., LTD.

陸原機械有限公司

42941 台中市神岡區大洲路53號

No. 53, Ta Chou Rd., Sheng Kang Dist., Taichung 42941, Taiwan

Tel.: +886-4-2526-1758 • 2526-2561

Fax: +886-4-2515-6286

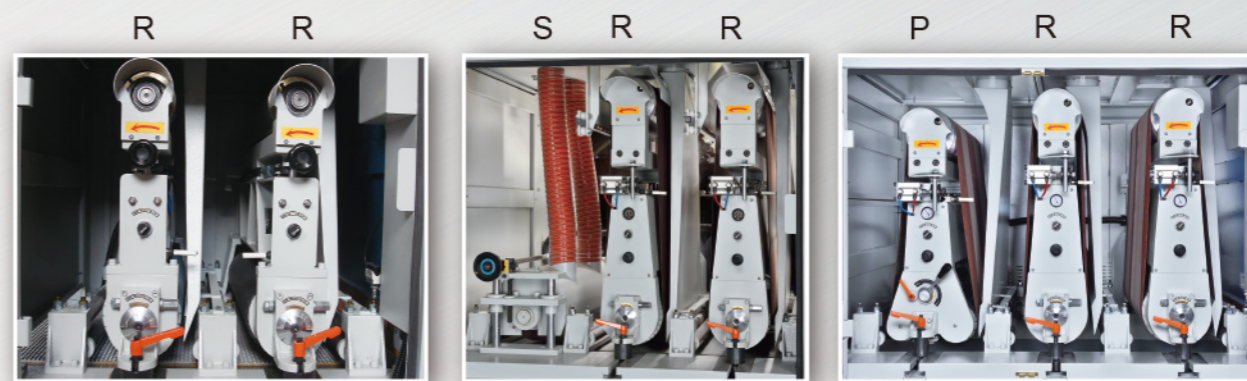
E-mail: sheng.yuan1@msa.hinet.net

<http://www.sherngyuan.com.tw>



# Automatic Metal Grinding Sander (Dry)

## 金屬自動磨砂機(乾式)



### SPECIFICATION

MODEL	型式	SH2583R / RR / RRR	SH3783R / RR / RRR	SH5283R / RR / RRR						
Working Width	加工寬度 (mm)	610			920	1,300				
Working Thickness	加工厚度 (mm)	0.3-130			0.3-130	0.3-130				
Spindle Motor	主軸馬力	10HP x 1	10HP x 2	10HP x 3	20HP x 1	20HP x 2	20HP x 3	30HP x 1	30HP x 2	30HP x 3
Feed Motor	輸送馬力	1HP	2HP	3HP	1HP	2HP	3HP	3HP	5HP	7 1/2HP
Working Thickness Setting Motor	昇降馬力	1/2HP	1/2HP	1/2HP	1/2HP	1/2HP	1/2HP	1/2HP	1HP	1HP
Feed Speed	輸送速度	1 m/min-11 m/min			1 m/min-11 m/min			1 m/min-11 m/min		
Sanding Belt Dimensions	砂帶尺寸	640 x 2,108 (25" x 83")			940 x 2,108 (37" x 83")			1,320 x 2,108 (52" x 83")		

# Automatic Metal Sanding/ Deburring Machine

## 自動金屬磨砂複合機

### HMI Touch screen panel with graphics

A 10-inch large color touch panel - all start-up and fault messages are clearly displayed with graphic signs.

### Speed of the conveyor belt can be easily adjusted

Thanks to the AC motor, the feeding speed can be set from 0.3m/min to 12m/min. The machine can be widely used in semiconductor related machinery and for processing stainless steel materials after flame cutting, laser cutting, punching (rough edges holes) etc.

### High-efficiency structure of rotating chamfering wheel

With 6 sets of rotating chamfering wheels set up, the rotating chamfering wheel can swing left and right to achieve the best structure combination with zero dead angle, allowing excellent grind quality and output value.

### The sanding brush set comes with an AC motor and can be adjusted up and down in 0.1mm increments.

The grinding brush group is adjusted up and down with AC motor. This set up allows increasing grinding force, extends service life of the brush set, making the machine operation costs more economical.

### 人性化觸控面板設定(圖形標示)

採用10英寸大型彩色觸控式面板,所有起動、以及故障訊息都以圖形標示顯示。

### 可自由調整輸送帶速度

藉由採用AC馬達機構,送料速度可設定0.3M/min~12M/min。更可廣泛加工使用於半導體相關機械以及不鏽鋼材料、火焰切割、雷射切割、沖床尖銳外邊等。

### 高效率旋轉倒角輪構造

以6組旋轉倒角輪組合構造,旋轉倒角輪可以左右擺動達成零死角最佳構造組合,可研磨出良好的品質及產值。

### 研磨毛刷組採AC馬達能以0.1mm單位進行調整昇降

研磨毛刷組使用AC馬達進行調整昇降,可提升研磨力,增加毛刷使用壽命,進而降低運轉成本。

### Technical Features:

The touch screen interface is installed. Features of the fault message prompts of the sanding/grinding position improves the automation of the sanding operation

R - The height of the R-head belt sanding wheel is adjusted by a servo electric cylinder.

X - Rotating chamfering wheels can swing left and right, and the rotation speed and the swing speed can both be adjusted according to needs

### 機械特性:

採用觸控式螢幕介面,圖面位置故障訊息提示的特色,提升研磨作業更自動化。

R 環帶磨光輪高低調整使用伺服電動缸調整。

X 旋轉倒角輪可左右擺動、旋轉速度與擺動速度接可以快慢調整。



## SPECIFICATION

Max. Working Width (mm)	最大工作寬度 (mm)	600	900	1350
Max. Working Thickness (mm)	最大工作高度 (mm)		100	
Sanding Drum Rotation Speed (RPM)	環帶輪轉速 (RPM)		400~1800	
Number Of Rotating Discs (PCS)	旋轉輪數量 (PCS)		6	
Disc Rotation Speed (RPM)	旋轉輪轉速 (RPM)		400~1200	
Conveyor Belt Speed (min)	輸送帶速度 (min)		0.3~12m/min	
Sanding Belt Measurement (mm)	環帶砂帶尺寸 (mm)	640x2180	940x2180	1320x2180

# Automatic Metal Sanding/ Deburring Machine

## 自動金屬磨砂複合機

### HMI Touch screen panel with graphics

A 10-inch large color touch panel - all start-up and fault messages are clearly displayed with graphic signs.

### Speed of the conveyor belt can be easily adjusted

Thanks to the AC motor, the feeding speed can be set from 0.3m/min to 12m/min. The machine can be widely used in semiconductor related machinery and for processing stainless steel materials after flame cutting, laser cutting, punching (rough edges holes) etc.

### Combination of high-efficiency disc removal slag wheels with endless sanding belt wheel and a disc sanding head

The combination structure of disc removal slag wheel, endless belt sanding belt wheel and disc sanding head ensure excellent quality of sanding and deburring.

### The sanding brush set comes with an AC motor, which can be adjusted up and down in 0.1mm increments.

Both the disc slag removal wheel and the disc brush are adjusted up and down with AC motor. This set up allows increasing grinding force, extends service life of both the disc slag removal wheel and the disc brush, making the machine operation costs more economical.

### 人性化觸控面板設定(圖形標示)

採用10英寸大型彩色觸控式面板，所有起動、以及故障訊息都以圖形標示顯示。

### 可自由調整輸送帶速度

藉由採用AC馬達機構，送料速度可設定0.3M/min~12M/min。更可廣泛加工使用於半導體相關機械以及不鏽鋼材料、火焰切割、雷射切割、沖床尖銳外邊等。

### 使用高效率圓盤去除熔渣輪與環帶砂布輪以及圓盤砂光頭組合

使用圓盤去除熔渣輪與環帶砂布輪以及圓盤砂光頭組合構造，可研磨出良好產品的品質。

### 研磨毛刷組採AC馬達能以0.1mm單位進行調整昇降

圓盤去除熔渣輪以及圓盤毛刷都以AC馬達調整昇降，可提升研磨力，增加圓盤去除熔渣輪以及圓盤毛刷使用壽命，進而降低消耗成本。

### Technical Features:

The touch screen interface is installed. Features of the fault message prompts of the sanding/grinding position improves the automation of the sanding operation

R - Height of the R-ring pulley is adjusted by a servo electric cylinder

V - Sets V-disc wheel can swing left and right. Removing both the slag wheels and the chamfer wheels is also optional

### 機械特性:

採用觸控式螢幕介面，圖面位置故障訊息提示的特色，提升研磨作業更自動化。

R 環帶輪高低調整使用伺服電動缸調整。

V 圓盤輪可左右擺動、可選擇去除熔渣輪、倒角輪。

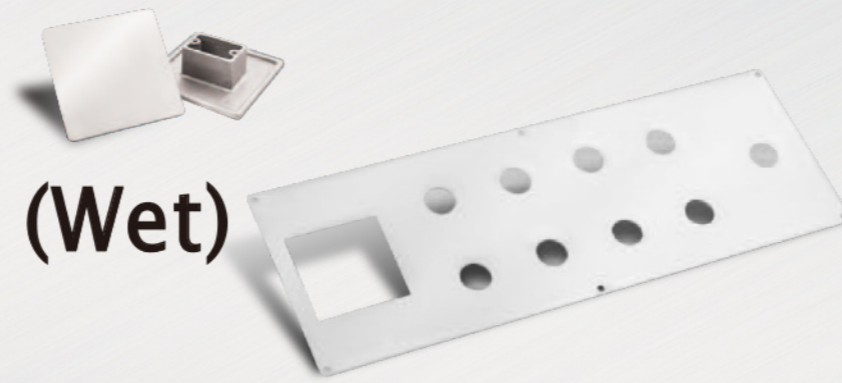


## SPECIFICATION

Max. Working Width (mm)	最大工作寬度 (mm)	600	900	1350
Max. Working Thickness (mm)	最大工作高度 (mm)		100	
Sanding Drum Rotation Speed (RPM)	環帶輪轉速 (RPM)		400~1800	
Disc Rotation Speed (RPM)	圓盤輪轉速度 (RPM)		300~1200	
Conveyor Speed (m/min)	輸送速度(m/min)		0.3~8m/min	
Sanding Belt Measurement (mm)	環帶砂帶尺寸 (mm)	640x2180	940x2180	1320x2180

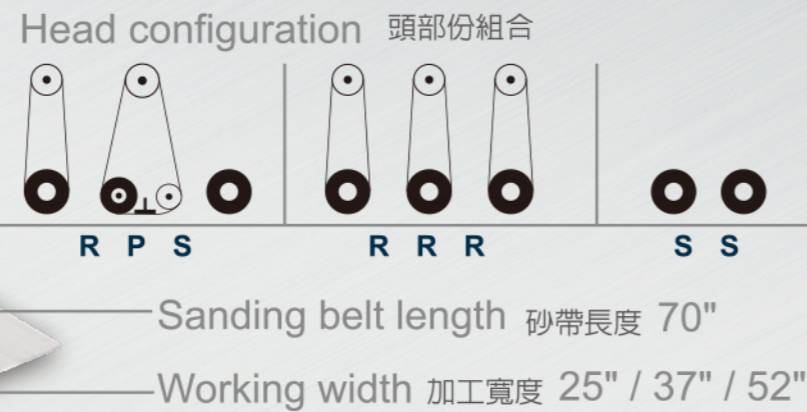
# Automatic Metal Grinding Sander (Wet)

## 金屬自動磨砂機(濕式)

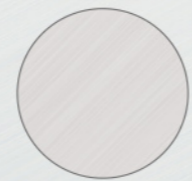


### SH-5270 RRS

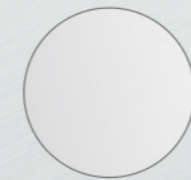
Series  
系列名稱



After Sanding  
磨砂後



Before Sanding  
磨砂前



### SPECIFICATION

MODEL	型式	SH2570R / RR / RRR			SH3770R / RR / RRR			SH5270R / RR / RRR		
Working Width	加工寬度 (mm)	610			920			1,300		
Working Thickness	加工厚度 (mm)	0.3-130			0.3-130			0.3-130		
Spindle Motor	主軸馬力	10HP x 1	10HP x 2	10HP x 3	20HP x 1	20HP x 2	20HP x 3	30HP x 1	30HP x 2	30HP x 3
Feed Motor	輸送馬力	1HP	2HP	3HP	1HP	2HP	3HP	3HP	5HP	7 1/2HP
Working Thickness Setting Motor	昇降馬力	1/2HP	1/2HP	1/2HP	1/2HP	1/2HP	1/2HP	1/2HP	1HP	1HP
Feed Speed	輸送速度	1 m/min-11 m/min			1 m/min-11 m/min			1 m/min-11 m/min		
Sanding Belt Dimensions	砂帶尺寸	640 x 1,778 (25" x 70")			940 x 1,778 (37" x 70")			1,320 x 1,778 (52" x 70")		

# Automatic Metal Grinding Sander (Wet)

## 金屬自動磨砂機(濕式)



**SH801 / SH121**



**SH802 / SH122**



**SH803 / SH123**



### SPECIFICATION

MODEL	型式	SH801 / SH121	SH802 / SH122	SH803 / SH123	SH804 / SH124
Working Dimensions (Width x Thickness)	加工規格 (寬 x 高)	200 x 50 / 300 x 50 mm (8" x 2" / (12" x 2"))	200 x 50 / 300 x 50 mm (8" x 2" / (12" x 2"))	200 x 50 / 300 x 50 mm (8" x 2" / (12" x 2"))	200 x 50 / 300 x 50 mm (8" x 2" / (12" x 2"))
Sanding Belt Motor	砂帶馬力	10HP x 1	10HP x 2	10HP x 3	10HP x 4
Feeding Motor	輸送帶馬力	1HP (inverter)	1HP (2HP)(inverter)	2HP (inverter)	3HP (inverter)
Pump Motor	泵浦馬力	1/4HP	1/4HP (1/2 HP)	1/2HP	1HP
Sanding Belt Specifications	砂帶規格	200 x 1,780 / 330 x 1,780 mm (8"X70" / (13"X70"))	200 x 1,780 / 330 x 1,780 mm (8" x 70" / (13" x 70"))	200 x 1,780 / 330 x 1,780 mm (8" x 70" / (13" x 70"))	200 x 1,780 / 330 x 1,780 mm (8" x 70" / (13" x 70"))
Sanding Speed (Freq. Inverter)	砂光速度 (變頻器)	900-1,800rpm	900-1,800rpm	900-1,800rpm	900-1,800rpm
Feed Speed (LCD Display)	送料速度 (液晶顯示)	1-8 M/min	1-8 M/min	1-8 M/min	1-8 M/min